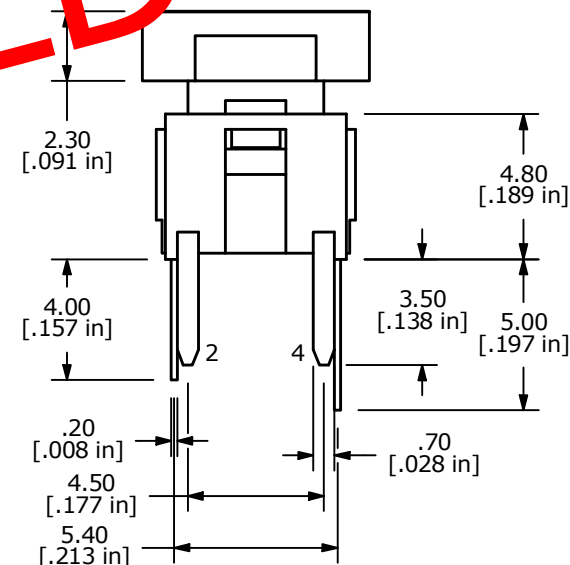
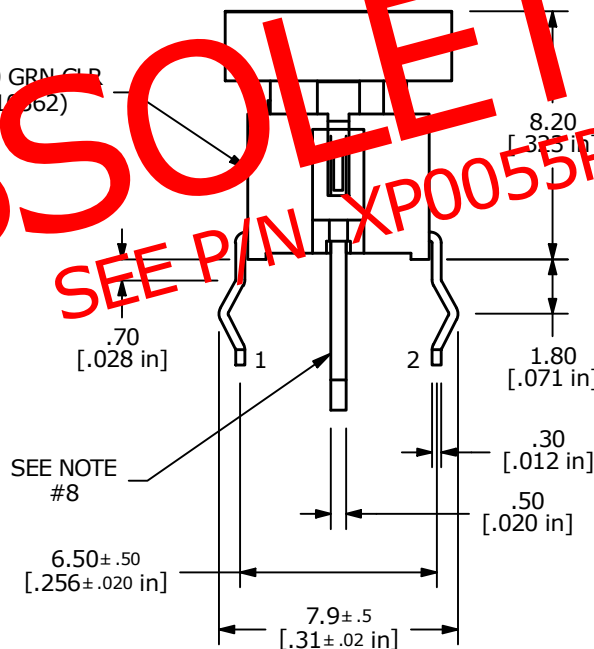


OBSOLETE

SEE PIN XP0055P

▲ TL1240 GRN CLR (P010562)



- NOTES:
1. ALL DIMENSIONS IN MM
 2. GENERAL TOLERANCE: X.X=±0.4
X.XX=±0.25
 3. RATING: 50mA @ 12VDC
 4. TRAVEL: 0.25 +0.2/0.1mm
 - ▲ 5. OPERATING FORCE: 160±50gf
 6. CONTACT RESISTANCE: 100 Milli-Ohms Max
 7. 2011/65/EU(ROHS) COMPLIANT
 - ▲ 8. SHORTER LEAD WITH COLOR IS NEGATIVE (CATHODE).
 9. ▲ DENOTES CRITICAL PARAMETER

▲ LED SPECS	UNITS	GREEN
FORWARD CURRENT	mA	20
FORWARD VOLTAGE	V	2.1-2.5
LUMINOUS INTENSITY	MCD	5

REV	PCR NO	DESCRIPTION	DATE	BY
F	22569	UPDATED CAP PART NO. TO P001020	10/28/16	MJR
E	19550	DRAWING UPDATE / CLEAN-UP	12/28/10	BGL



TITLE TL1240GQ2JBLK				
SCALE	DATE	DR	DWG	REV
4:1	12/28/2010	BGL	XP0055A	F

THE INFORMATION CONTAINED IN THIS DOCUMENT IS PROPRIETARY TO E-SWITCH AND IS NOT TO BE COPIED OR TRANSFERRED